

# GOLDAIR

CERAMIC TOWER HEATER

OPERATING INSTRUCTIONS



For model: GCT300

## WARNINGS AND SAFEGUARDS

1. Use only the voltage specified on the rating plate of the appliance.
2. Keep all objects at least 1 metre from the front, sides and rear of the appliance. Do not place appliance close to radiant heat source.
3. Do not operate in areas where petrol, paint or other flammable liquids are used or stored.
4. Do not insert or allow foreign objects to enter any ventilation or exhaust opening, as this may cause an electric shock, fire or damage to the appliance.
5. Do not operate this appliance with a damaged cord, plug or after the appliance malfunctions or has been dropped or damaged in any manner. Return to a qualified electrical person for examination, electrical service or repair.
6. This appliance is intended for household use only and not for commercial or industrial use.
7. Use this appliance only as described in this manual. Any other use is not recommended by the manufacturer and may cause fire, electrical shock or injury.
8. The common cause of overheating is deposits of dust or fluff in the appliance. Ensure these deposits are removed regularly by unplugging the appliance and vacuum cleaning the air vents and grills.
9. Do not use abrasive cleaning products on this appliance. Clean with a damp cloth (not wet) rinsed in hot soapy water only. Always removed plug from the mains supply before cleaning.
10. Do not connect the appliance to mains voltage until completely assembled and adjusted.
11. Switch off and use handles provided when moving.
12. Do not operate with cord set coiled up as a heat build up is likely, which could be sufficient to become a hazard.
13. The use of an extension cord with this appliance is not recommended.
14. Do not remove plug from power socket until the appliance has been switched off.
15. Do not remove plug from power socket by pulling cord – always grip plug.
16. Always unplug appliance when not in use.
17. Do not twist, kink or wrap the cord around the appliance, as this may cause the insulation to weaken and split. Always ensure that all cord has been removed from any cord storage area and is unrolled before use.
18. This appliance is not intended for use by young children or infirm persons unless they have been adequately supervised by a responsible person to ensure that they can use the appliance safely.
19. Do not use this appliance in the immediate surrounds of a bath, a shower, or a swimming pool or other liquids. The appliance must not be immersed in any liquids.
20. When the appliance has been unpacked, check for transport damage and ensure all parts have been delivered. If parts are missing or the appliance has been damaged, contact the Goldair Customer Services Team. (refer to details on back page)
21. If your appliance does not work, or is not working properly, contact the place of purchase or the Goldair Customer Services Team. (refer to details on back page). Repair work on the appliance by unqualified persons can cause serious risk to the user.
22. There are no user serviceable parts installed in the unit.
23. Do not put your fingers or other articles into or near the air inlet or outlet. Do not sit on the unit.
24. Do not place the unit in wardrobes or other enclosed spaces as this may cause fire hazards.
25. This unit is not supposed to be used in or around locations where foodstuffs, works of art or delicate articles of science, etc are stored.
26. Indoor use only.
27. Children should be supervised to ensure that they do not play with the appliance.

## OVERVIEW OF GOLDAIR FAN HEATER

Your Goldair Ceramic Tower Heater is designed to provide direct personal heating. The heater is equipped with two heat settings and a fan option to ensure your precise heating needs are met.

## OPERATING YOUR HEATER

Always choose a safe location for the heater, keeping in mind the safety precautions outlined. Ensure all packaging has been removed from the unit before use. This appliance requires no installation, it should be used solely as a portable appliance.

## HEAT CONTROL SWITCH

The control switch positions are:

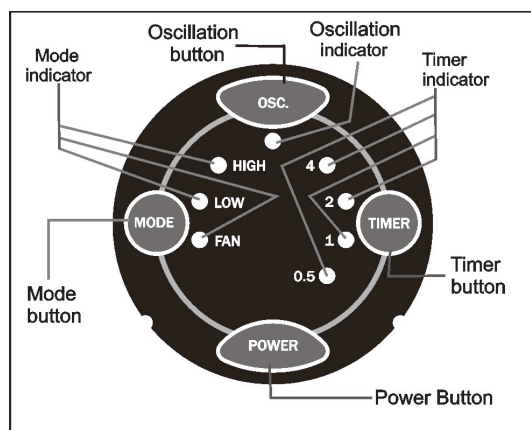


FIGURE 1

The heater may be operated by the manual controls located on the heater (as shown in FIGURE 1) or by the remote control (as shown in FIGURE 2)

The heater must be placed on a flat floor or the tip-over switch will shut it off automatically.

1. When heater is plugged in and turned on using the power switch on the side of the unit base, there will be a "beep" and a blue power light to indicate that there is power to the unit. The blue power light will be lit until the heater is unplugged from the power outlet.  
WARNING: Be sure plug fits tightly in power outlet. A loose fit will cause overheating and damage the plug.  
NOTE: Plug and cord set may feel warm during normal usage.
2. Power button. Press this button will start the heater. Upon turning the heater on, the unit will be in the FAN mode and the FAN indicator will be light.
3. Mode button. When this button is pushed, LOW indicate light comes on and heater is in the low heat mode.(1100 watts)
4. Press the Mode button again and the LOW indicator light goes off and the HIGH indicator light comes on and the heater now is in HIGH mode(1800 watts).
5. Timer button. Press it once and the light comes on indicating 1/2 hour of time. Press it again and the light indicates 1 hours. Press it a third time and it indicates 1.5 hours. The total time that can be indicated at one time is 7.5 hours. Continuing to press the Timer button will cycle through the settings until all timer lights are off. When the time indicator lights are off, the heater will run continuously.
6. Oscillation button. Press this button and the Oscillation light comes on and the heater will oscillate back and forth. Press it again and the light will go out and the oscillation will stop.
7. The heater must be placed flat on the floor or the tip-over switch will shut it off automatically.
8. To disconnect heater, press "Power" button, and turn off the power switch, then remove plug from outlet.

WARNING : DO NOT PLACE THE HEATER UNDER A POWER SOCKET  
NEVER LOCATE THE HEATER INTO BATHROOM OR OTHER WET OR DAMP LOCATIONS

## REMOTE CONTROL

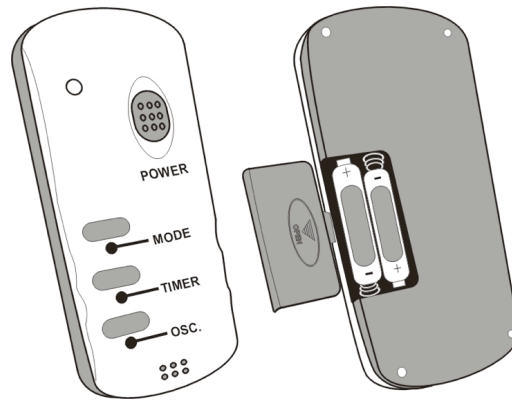


FIGURE 2

1. Plug the heater into outlet and turn on the power switch on the side of the unit base.
2. Press the POWER button will start the heater.
3. The MODE, TIMER and OSC. buttons function in the exact same manner as listed in steps 3 through 7 of the operating instructions listed above.
4. When press any button once, the indicated light on remote will flash once.
5. The remote control is powered by two AAA batteries. There is a cover on the back of the remote control that can be removed for replacement of the batteries as required.

### SAFETY DEVICE ~ This appliance has two protection devices:

The first device, automatically disconnects & reconnects the appliance at a preset temperature, The second safety device disconnects the appliance permanently in case of overheating, by means of a thermal fuse. (It is non resettable)

### **IMPORTANT! ~ NEVER COVER THIS HEATER!**

Covering the heater will cause activation of the non resettable safety fuse.

## MAINTENANCE

**WARNING: ALWAYS UNPLUG THE CORD BEFORE MOVING OR SERVICING.**

**DO NOT IMMERSE HEATER IN WATER.**

**CLEANING:** Clean the heater at least once a month, more often if dirty.

Clean the heater grill with the vacuum brush attachment on your vacuum cleaner. This will remove lint and dirt from the inside of the heater.

Do not attempt to take apart the heater.

Do not remove grill guard or allow heater to be operated without grill guard in place.

Clean the body of the heater with a soft cloth. (NEVER USE ALCOHOL OR SOLVENTS.)

**STORAGE:** Store the heater with these instructions in the original carton in a cool, dry place.

## ADDITIONAL SAFETY INSTRUCTIONS

- This appliance is not intended for use by persons (including children) with reduced physical, sensory or mental capabilities, or lack of experience and knowledge, unless they have been given supervision or instruction concerning use of the appliance by a person responsible for their safety.
- Children should be supervised to ensure that they do not play with the appliance.
- If the supply cord is damaged, it must be replaced by the manufacturer, its service agent or similarly qualified persons in order to avoid a hazard.
- **WARNING** : In order to avoid overheating, do not cover the heater.
- Indoor use only.
- The heater must not be located immediately below a socket-outlet.
- Do not use this heater in the immediate surroundings of a bath, a shower or swimming pool.
- Do not use this heater with a programmer, timer, separate remote-control system or any other device that switches the heater on automatically.

# **GOLDAIR**

SUPPORT AND TECHNICAL ADVICE

North Shore City, Auckland, New Zealand

Monday – Friday 8am-5pm

Phone: 0800 232 633

Website: [www.goldair.co.nz](http://www.goldair.co.nz)

# GOLDAIR

Your Goldair product has been inspected and tested and is guaranteed subject to the following for a period to two years from the date of purchase against defects in workmanship and materials. During this period, such defects will be rectified by repair or replacement of the product purchased. Your product contains no user serviceable components and this warranty becomes invalid if in our opinion the product has been misused, abused, incorrectly installed, tampered with, connected to an electrical supply not corresponding with the name plate specification, or subjected to power surges. The warranty does not include any labour or other associated expense that may be involved in removal or installation of the product. Normal wear and tear is expressly excluded.

If your Goldair product fails to operate satisfactorily, please return it to the retailer from whom it was purchased. To obtain a repair or replacement product under this warranty, you will need to produce satisfactory evidence of date of purchase. The completed warranty and purchase receipt must be presented with the product. The warranty should be filled out at the time of purchase. It is in your interest to make sure this is done.

If the product is to be replaced (cannot be repaired) then that replacement will be of the same or similar product or accessory excluding packaging, instruction card etc. Where a replacement product is supplied, this shall be guaranteed for the balance of the original warranty period.

Any model that is no longer available will be replaced by a model of a value and with such features as we consider appropriate in the circumstances. Goldair Ltd is not responsible for freight forwarding charges, losses or damage in transit.

If service is required after the warranty period has expired, the product should be returned to a qualified electrical technician. Service outside of the warranty period will be at your cost.

Consumers Guarantee Act (1993).

In accordance with the above act consumers are advised that: The manufacturer does not undertake that repair facilities and parts are necessarily available for this product.

If any of the provisions of the foregoing are contrary to any relevant legislation, then that provision shall be deemed to be excluded from the warranty and the rest of the provisions will continue to apply.

**IMPORTANT: PLEASE RETAIN THIS WARRANTY CARD**

NAME: \_\_\_\_\_

ADDRESS: \_\_\_\_\_

PURCHASED FROM: \_\_\_\_\_

SUBURB: \_\_\_\_\_

DATE OF PURCHASE: \_\_\_\_\_

NAME OF PRODUCT: \_\_\_\_\_

MODEL No: \_\_\_\_\_

TWO YEAR WARRANTY