

# GOLDAIR

## Stick Blender

Model GSB400

### OPERATING INSTRUCTIONS



GSB400: 230-240V ~, 50Hz, 600W – Stick Blender with Whisk and Chopper

---

Thank you for choosing a Goldair Electric Stick Blender. This Goldair appliance has been designed and manufactured to a high standard of engineering and with proper use and care, as described in this leaflet, will give you years of useful service. Please read these instructions carefully.

---

## GENERAL CARE AND SAFETY GUIDE

Please read all instructions carefully before using this appliance and keep them for future reference.

### ALWAYS

- ✓ Always ensure hands are dry before handling the plug or switching on the Stick Blender.
- ✓ Always use the Stick Blender on a secure, dry, level surface.
- ✓ Always disconnect the blender from the supply if it is left unattended and before assembling, disassembling or cleaning.
- ✓ Carry out regular checks of the supply cord to ensure no damage is evident.
- ✓ Take care when handling the sharp cutting blades while emptying the bowl and during cleaning.

### NEVER

- ✗ Never use this appliance outdoors.
- ✗ Never use this appliance for any purpose other than its intended use. This appliance is for household use only.
- ✗ This appliance is not intended for use by persons (including children) with reduced physical, sensory or mental capabilities or lack of experience and knowledge, unless they are supervised or have been given instruction concerning the use of the Stick Blender by a person responsible for their safety.
- ✗ Close supervision is necessary when the appliance is near children.
- ✗ Never place this appliance on or near a hot gas or electric burner or where it could touch a heated oven or microwave oven.
- ✗ Never use harsh, abrasive or caustic cleaners to clean this appliance.
- ✗ Never operate the appliance with a damaged cord or plug, after it malfunctions, or if it has been damaged in any manner.
- ✗ The Stick Blender is not intended to be operated by means of an external timer or separate remote-control system.

# COMPONENTS



- A. Variable Speed Control (1-5)
- B. Low Speed Button
- C. High Speed Button
- D. Motor unit
- E. Detachable Stainless Steel Stick
- F. Gear Box
- G. Whisk Accessory
- H. Wall Mounting Accessory
- I. Chopper bowl cover
- J. Chopper "S" blade
- K. Chopper bowl
- L. Beaker
- M. Slip Proof Mat

# OPERATING YOUR STICK BLENDER

**CAUTION:** Ensure the stick blender is unplugged from the Mains Power Supply before removing or connecting any attachments.

The stick blender is perfectly suited for preparing dips, sauces, soups, mayonnaise and baby food as well as smoothies and milkshakes.

1. Connect the motor unit to the stick by turning clockwise and ensure it is locked into place.
2. Plug the power cord to the Mains Power Supply. (Use only the voltage specified on the rating label.)
3. Press either the Low or High button once the stick blender has been lowered into the food or liquid.
4. **Note:** The ON/OFF button must be depressed for the stick blender to operate.
5. Detach the stick from the motor unit after use by twisting counter-clockwise.
6. You can use the stick blender with the beaker included along with any other bowl, saucepan or jug. Remove from heat when blending directly in the saucepan while cooking.

**USES:** Aerating – smoothies, milkshakes and cocktails

Pureeing – fruit and vegetables, soup, sauces, dips, salsa and baby food

Chops – onions, herbs and garlic

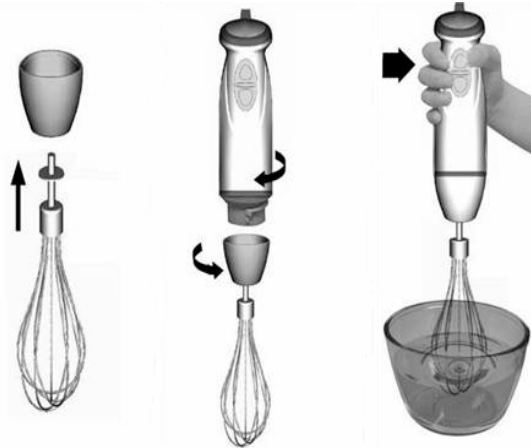
Mixing – cocktails

Whip – cream



## OPERATING YOUR WHISK

1. The whisk is designed for whipping cream, beating egg whites, mixing sponges and ready-mix desserts.
2. Inset the whisk into the gear box, and connect the gear box to the motor unit by turning clockwise until it locks.
3. Place the whisk in a vessel and press either Low or High to operate.
4. Remove the gear box from the motor unit after use.
5. Remove the whisk from the gear box before cleaning.



## OPERATING YOUR CHOPPER

The chopper is perfectly suited for hard food, such as chopping meat, cheese, onion, herbs, garlic, carrots, walnuts, almonds, prunes etc.

Do not chop extremely hard food, such as ice cubes, nutmeg, coffee beans and grains.

1. Carefully remove the plastic cover from the blade.  
**Caution: the blade is very sharp!** Always hold it by the upper plastic part.
2. Place the blade on the center pin of the chopper bowl. Press down the blade and lock bowl. Always place the chopper bowl on the anti-slip base.
3. Place the food in the chopper bowl.
4. Place the chopping bowl lid on the chopper bowl.
5. Turn the motor unit on the chopping bowl lid until it locks.
6. Press Low or High to operate the chopper. During processing, hold the motor unit with one hand and the chopper bowl with the other.
7. After use, remove the motor unit from the chopping bowl lid by twisting counter-clockwise. Remove the chopping bowl lid.
9. Carefully take out the blade.
10. Remove the processed food from the chopper bowl.



## PROCESSING GUIDE FOR (500ml chopping bowl)

Food	Maximum	Operation time
Meat	250g	15sec
Herbs	50g	10sec
Nuts, almonds	150g	15sec
Cheese	100g	10sec
Bread	80g	10sec
Onions	200g	10sec
Biscuits	150g	10sec
Soft fruit	200g	10sec

## CARE AND CLEANING

1. Remove the cord from the Mains Power Supply before detaching the stick and cleaning.
2. Cleaning the motor unit and chopping bowl lid only with a damp cloth only. Do not immerse the motor unit in water!
3. All other parts can be cleaned in the dish washer. However, after processing very salty food, you should rinse the blades right away.
4. When processing food with color, the plastic parts of the appliance may become discolored Wipe these parts with vegetable oil before placing in the dishwasher.
5. Be careful when cleaning the blades as they are very sharp.



# GOLDAIR

### SUPPORT AND TECHNICAL ADVICE

North Shore City, Auckland, New Zealand  
Monday – Friday 8am-5pm  
Phone: 0800 232 633  
Website: [www.goldair.co.nz](http://www.goldair.co.nz)

# GOLDAIR

Your Goldair product has been inspected and tested and is guaranteed subject to the following for a period to two years from the date of purchase against defects in workmanship and materials. During this period, such defects will be rectified by repair or replacement of the product purchased. Your product contains no user serviceable components and this warranty becomes invalid if in our opinion the product has been misused, abused, incorrectly installed, tampered with, connected to an electrical supply not corresponding with the name plate specification, or subjected to power surges. The warranty does not include any labour or other associated expense that may be involved in removal or installation of the product. Normal wear and tear is expressly excluded.

If your Goldair product fails to operate satisfactorily, please return it to the retailer from whom it was purchased. To obtain a repair or replacement product under this warranty, you will need to produce satisfactory evidence of date of purchase. The completed warranty and purchase receipt must be presented with the product. The warranty should be filled out at the time of purchase. It is in your interest to make sure this is done.

If the product is to be replaced (cannot be repaired) then that replacement will be of the same or similar product or accessory excluding packaging, instruction card etc. Where a replacement product is supplied, this shall be guaranteed for the balance of the original warranty period.

Any model that is no longer available will be replaced by a model of a value and with such features as we consider appropriate in the circumstances. Goldair Ltd is not responsible for freight forwarding charges, losses or damage in transit.

If service is required after the warranty period has expired, the product should be returned to a qualified electrical technician. Service outside of the warranty period will be at your cost.

Consumers Guarantee Act (1993).

In accordance with the above act consumers are advised that: The manufacturer does not undertake that repair facilities and parts are necessarily available for this product.

If any of the provisions of the foregoing are contrary to any relevant legislation, then that provision shall be deemed to be excluded from the warranty and the rest of the provisions will continue to apply.

## IMPORTANT: PLEASE RETAIN THIS WARRANTY CARD

NAME: \_\_\_\_\_

ADDRESS: \_\_\_\_\_

PURCHASED FROM: \_\_\_\_\_

SUBURB: \_\_\_\_\_

DATE OF PURCHASE: \_\_\_\_\_

NAME OF PRODUCT: \_\_\_\_\_

MODEL No: \_\_\_\_\_

**TWO YEAR WARRANTY**